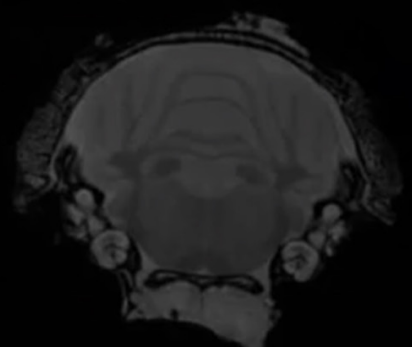
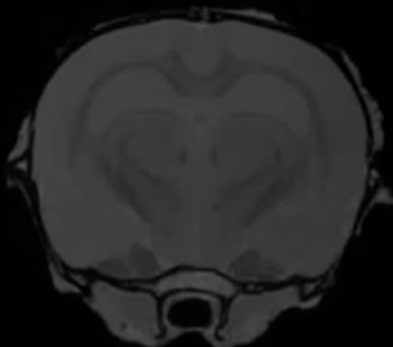
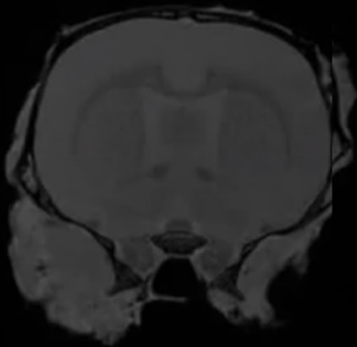
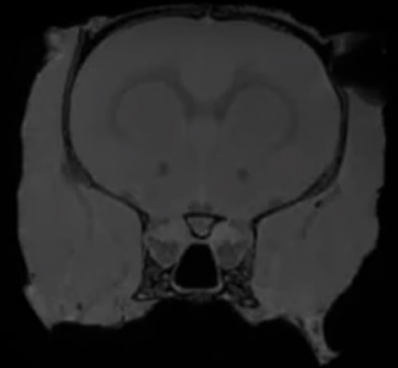
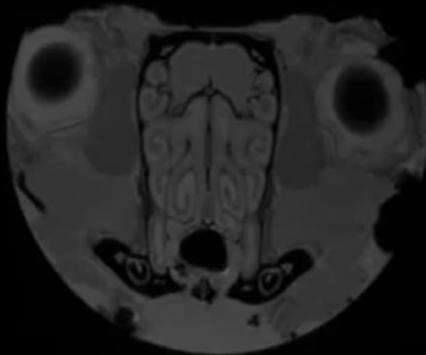
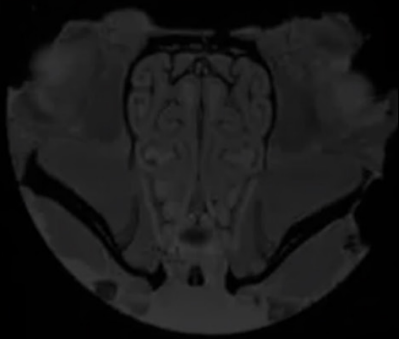


# M3<sup>TM</sup>

## for mice and small animal imaging

Generates high resolution 3D anatomical, functional and molecular images with a bore size optimized for mice.



**MRI** Simplified.  
Optimized.

 **aspect**imaging

## System Specifications

### Imaging Pulse Sequences

Spin Echo	<b>2D</b> DWI – with diffusion gradients IR – with preceding inversion pulse
Fast Spin Echo	<b>2D and 3D</b> DWI – with diffusion gradients IR – with preceding inversion pulse
Gradient Echo	<b>2D and 3D</b>
IRSnap	GRE based with multiple inversion time
DCE	GRE based Dynamic Contrast Enhancement
Cardiac Cine	GRE based ECG triggered Cine
DTI	FSE based diffusion tensor imaging
Dixon	FSE based fat separation
Field of View	80 x 80 x 35 mm <sup>3</sup> spheroid

### Front End—Magnet & Stand

Dimensions (Height x Width x Depth)	1080 x 734 x 734 mm / 42.5 x 29 x 29 in
Weight	560 Kg / 1232 Lbs
Magnet Opening: Flange Insertion Diameter Inner Bore (Height x Width)	70 mm / 2.8 in  50 x 130 mm / 2 x 5.1 in
Imaging Volume	80 x 80 x 35 mm <sup>3</sup> spheroid
B <sup>0</sup> (Tesla)	1.0 T

### Gradients

Strength	440 (X,Y), 540 (Z) mT/m @ 60 A
Linearity (for Entire Imaging Volume)	Better than 4%
Slew Rate (T/m/s)	1750 T/m/s @ 60 A / 250 us

### Back End—Electronics Cabinet

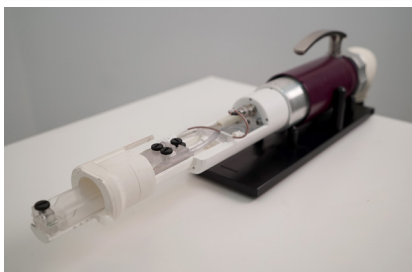
Dimensions (Height x Width x Depth)	1760 x 600 x 1150 mm / 69.3 x 23.6 x 45.3 in
Weight	300 Kg / 660 Lbs

### Electrical Requirements

Operator Station	Requires an electrical outlet with the following specifications: 120/230 VAC, single phase, 3 A 50/60 Hz
Line Voltage	<ul style="list-style-type: none"> <li>• 220-240 VAC, 15 A, single phase in countries using 220-240V</li> <li>• 208 VAC, 15 A, single phase in countries using 120V</li> </ul>

## System Accessories

### Animal Handling System Options



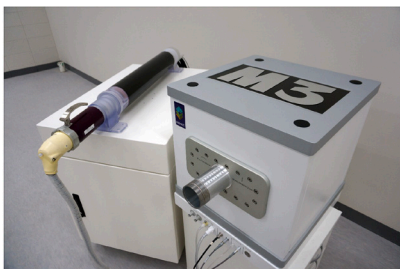
Part No.	Item
71003861	Integrated Mouse Body L50D30 Handling System
71003862	Integrated Mouse Body L80D30 Handling System
71003864	Integrated Mouse Head L25D23 Handling System
71005188	Integrated Large Mouse Body L50D38 Handling System

### General Options



Part No.	Item
74000115	Advanced Physiological Monitoring System
71004590	Heated water circulator pump 115V
71004715	Heated water circulator pump 220V

### PET/MRI Solutions



The M3™ compact MRI System may be paired with Brightonix Imaging's preclinical positron emission tomography (PET) system, which is based on advanced silicon photomultiplier (SiPM) technology, to provide excellent sequential imaging performance for PET/MRI preclinical studies.

Compact. Powerful. Affordable.

Discover more at [aspectimaging.com](http://aspectimaging.com)



Aspect Imaging, Ltd.  
3200 West End Avenue  
Suite 500  
Nashville, TN 37203

Call: +1 866 609 1554  
Email: [info@aspectimaging.com](mailto:info@aspectimaging.com)  
Web: [www.aspectimaging.com](http://www.aspectimaging.com)

M3™ and M-Series™ are registered trademarks of Aspect Imaging, Ltd. Aspect Imaging is a global leader in the design and development of compact, high-quality MR imaging solutions, designed for use in pre-clinical research and medical applications.