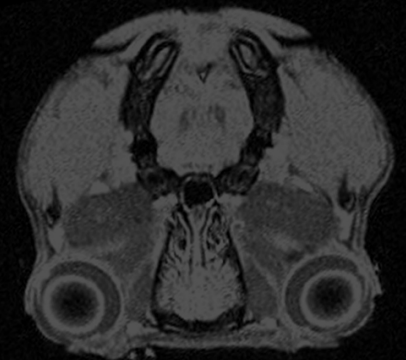
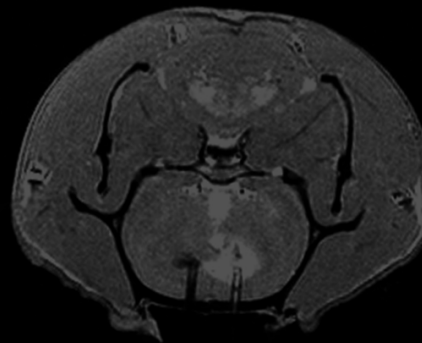
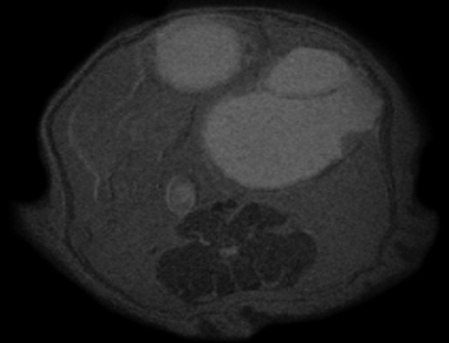
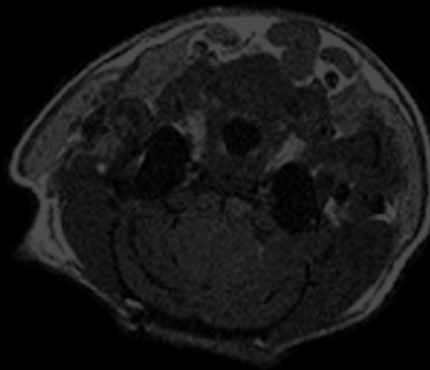
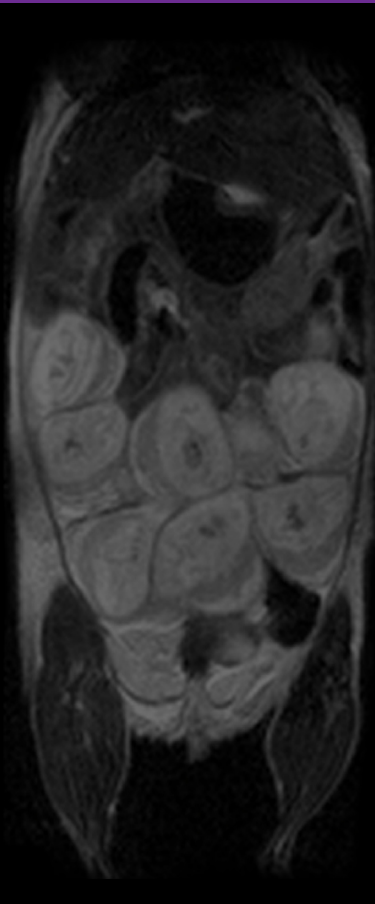


M5™

for mice and rat imaging

Dedicated imaging of both mice and rats, providing non-invasive 3D anatomical, functional and molecular read-outs in rodents and ex vivo samples.



MRI Simplified.
Optimized.

 **aspect**imaging

System Specifications

Imaging Pulse Sequences		Gradients	
Spin Echo	2D DWI – with diffusion gradients IR – with preceding inversion pulse	Strength	430 (X,Y,Z) mT/m @ 60 A
Fast Spin Echo	2D and 3D DWI – with diffusion gradients IR – with preceding inversion pulse	Linearity (for Entire Imaging Volume)	Better than 5%
Gradient Echo	2D and 3D	Slew Rate (T/m/s)	1720 T/m/s @ 60 A / 250 us
IRSnap	GRE based with multiple inversion time		
DCE	GRE based Dynamic Contrast Enhancement		
Cardiac Cine	GRE based ECG triggered Cine		
DTI	FSE based diffusion tensor imaging		
Dixon	FSE based fat separation		
Field of View	90 x 90 x 60 mm ³ spheroid		
Front End—Magnet & Stand		Back End—Electronics Cabinet	
Dimensions (Height x Width x Depth)	1133 x 800 x 800 mm / 44.6 x 31.5 x 31.5 in	Dimensions (Height x Width x Depth)	1760 x 600 x 1150 mm / 69.3 x 23.6 x 45.3 in
Weight	950 Kg / 2095 Lbs	Weight	300 Kg / 660 Lbs
Magnet Opening: Flange Insertion Diameter Inner Bore (Height x Width)	No insertion flange in MS (the bore is open) 76 x 200 mm /		
Imaging Volume	90 x 90 x 60 mm ³ spheroid		
B ⁰ (Tesla)	1.0 T		
Electrical Requirements			
Operator Station	Requires an electrical outlet with the following specifications: 120/230 VAC, single phase, 3 A 50/60 Hz		
Line Voltage	<ul style="list-style-type: none"> • 220-240 VAC, 15 A, single phase in countries using 220-240V • 208 VAC, 15 A, single phase in countries using 120V 		

System Accessories

Animal Handling System Options



Part No.	Item
74000026	Mouse Head D20 Coil System with Heating System
74000502	Mouse Body AT L80D35 Coil and Bed with Heating System
74000044	Rat Head D30 Coil System with Heating
74000503	Rat Body AT L80D60 Coil and Bed with Heating System

General Options



Part No.	Item
74000091	Advanced Isoflurane Anesthesia System
74000424	Advanced Physiological Monitoring System
71004590	Heated water circulator pump 115V
71004715	Heated water circulator pump 220V
73000006	VivoQuant Image Analysis and Co-registration Software

PET/MRI Solutions



The M5™ Compact MRI System may be paired with Brightonix Imaging's preclinical positron emission tomography (PET) system, which is based on advanced silicon photomultiplier (SiPM) technology, to provide excellent sequential imaging performance for PET/MRI preclinical studies.

Compact. Powerful. Affordable.

Discover more at aspectimaging.com



Aspect Imaging, Ltd.
3200 West End Avenue
Suite 500
Nashville, TN 37203

Call: +1 866 609 1554
Email: info@aspectimaging.com
Web: www.aspectimaging.com

M5™ and M-Series™ are registered trademarks of Aspect Imaging, Ltd. Aspect Imaging is a global leader in the design and development of compact, high-quality MR imaging solutions, designed for use in pre-clinical research and medical applications.