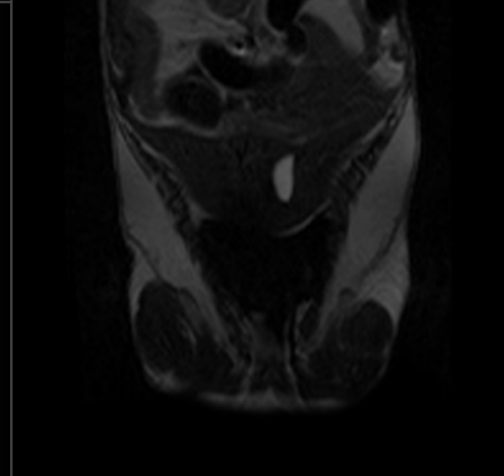
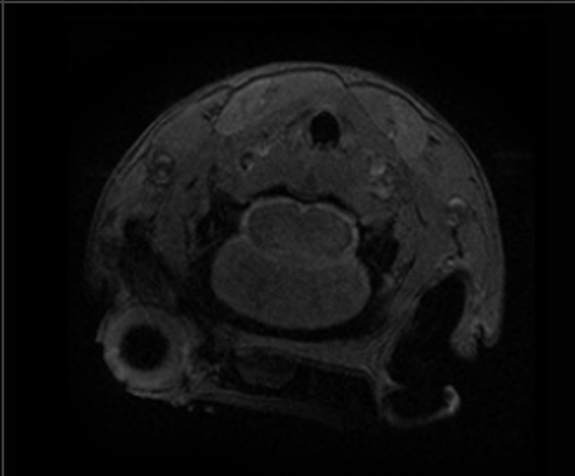
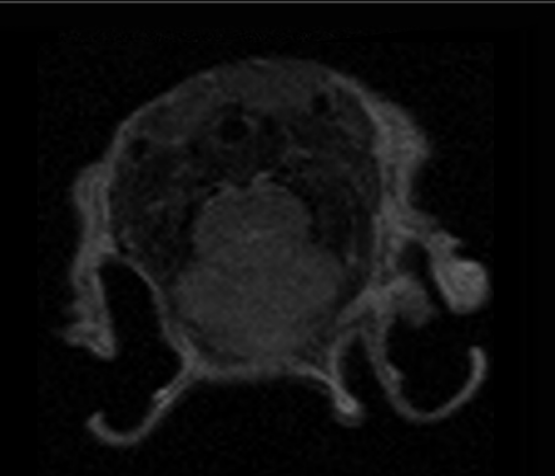
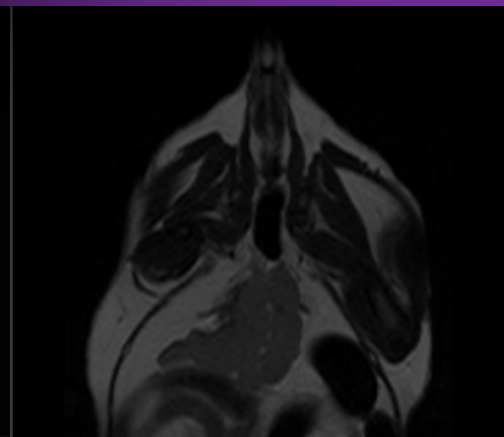
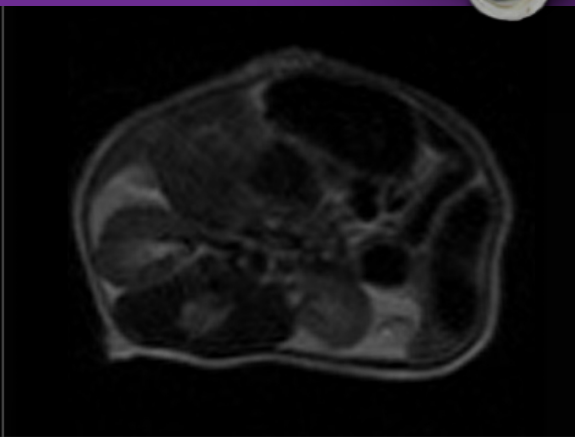
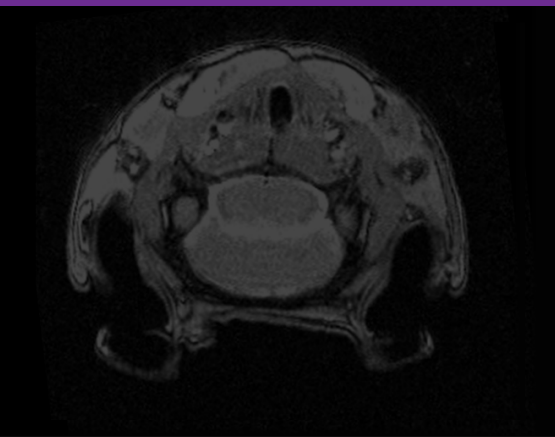


M7™

for small mice to large rat imaging

With flexibility for imaging of small mice to large rats, the M7™ enables 2D and 3D ex vivo, in vivo and in vitro imaging.



MRI Simplified.
Optimized.

 **aspect**imaging

System Specifications

Imaging Pulse Sequences	
Spin Echo	2D DWI – with diffusion gradients IR – with preceding inversion pulse
Fast Spin Echo	2D and 3D DWI – with diffusion gradients IR – with preceding inversion pulse
Gradient Echo	2D and 3D
IRSnap	GRE based with multiple inversion time
DCE	GRE based Dynamic Contrast Enhancement
Cardiac Cine	GRE based ECG triggered Cine
DTI	FSE based diffusion tensor imaging
Dixon	FSE based fat separation
Field of View	120 x 120 x 70 mm ³ spheroid

Gradients	
Strength	150 (X,Y,Z) mT/m @ 50 A
Linearity (for Entire Imaging Volume)	Better than 6.5%
Slew Rate (T/m/s)	750 T/m/s @ 50 A / 200 us

Front End—Magnet & Stand	
Dimensions (Height x Width x Depth)	1320 x 790 x 950 mm / 52 x 31 x 37.5 in
Weight	1550 Kg / 3415 Lbs
Magnet Opening: Flange Insertion Diameter Inner Bore (Height x Width)	97 mm / 3.8 in 220 x 90 mm / 8.7 x 3.5 in
Imaging Volume	120 x 120 x 70 mm ³ spheroid
B ⁰ (Tesla)	1.0 T

Back End—Electronics Cabinet	
Dimensions (Height x Width x Depth)	1760 x 600 x 1150 mm / 69.3 x 23.6 x 45.3 in
Weight	300 Kg / 660 Lbs

Electrical Requirements	
Operator Station	Requires an electrical outlet with the following specifications: 120/230 VAC, single phase, 3 A 50/60 Hz
Line Voltage	<ul style="list-style-type: none"> • 220-240 VAC, 15 A, single phase in countries using 220-240V • 208 VAC, 15 A, single phase in countries using 120V

System Accessories

Animal Handling System Options



Part No.	Item
71004478	Integrated Mouse Body L50D30 Handling System (for M7-P / M7-S-P / M7-P-C)
71004579	Integrated Mouse Body L80D30 Handling System (for M7-P / M7-S-P / M7-P-C)
71004576	Integrated Mouse Head L25D23 Handling System (for M7-P / M7-S-P / M7-P-C)
71005187	Integrated Large Mouse Body L50D38 Handling System (for M7-P / M7-S-P / M7-P-C)
71004474	Integrated Large Rat Body L90D71 Handling System (for M7-C / M7-P-C)
71004475	Integrated Rat Body L90D60E Handling System
71004577	Integrated Rat Head L40D35 Handling System

General Options



Part No.	Item
74000115	Advanced Physiological Monitoring System
74000091	Advanced Isoflurane Anesthesia System
71004590	Heated water circulator pump 115V
71004715	Heated water circulator pump 220V
73000006	VivoQuant Image Analysis and Co-registration Software

Special System Options

Part No.	Item
72010370	SimPET Compact Preclinical PET System (for M7-P / M7-S-P / M7-P-C)
74000352	M7-P Upgrade Kit (for M7™ / M7-S / M7-C)
74000476	C13 Upgrade Kit with PC (for M7™ / M7-P)
74000463	C13 Upgrade Kit for without PC (for M7™ / M7-P)

PET/MRI Solutions



Pair the M7™ Compact MRI System with the preclinical positron emission tomography (PET) system from Brightonix Imaging to enhance your research—from sequential PET/MRI imaging to SimPET™, the world's first complete and most cost-effective permanent magnet simultaneous PET/MRI scanner for preclinical studies.

Compact. Powerful. Affordable.

Discover more at aspectimaging.com



Aspect Imaging, Ltd.
3200 West End Avenue
Suite 500
Nashville, TN 37203

Call: +1 866 609 1554
Email: info@aspectimaging.com
Web: www.aspectimaging.com

M7™ and M-Series™ are registered trademarks of Aspect Imaging, Ltd. Aspect Imaging is a global leader in the design and development of compact, high-quality MR imaging solutions, designed for use in pre-clinical research and medical applications.