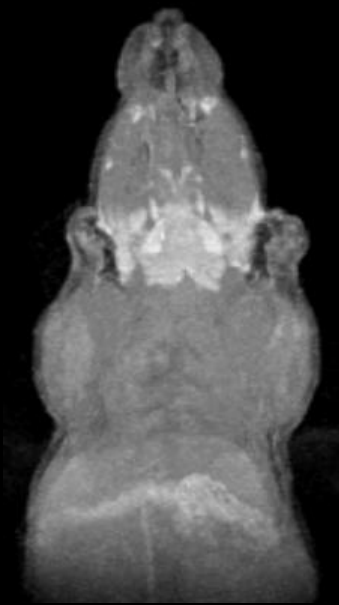
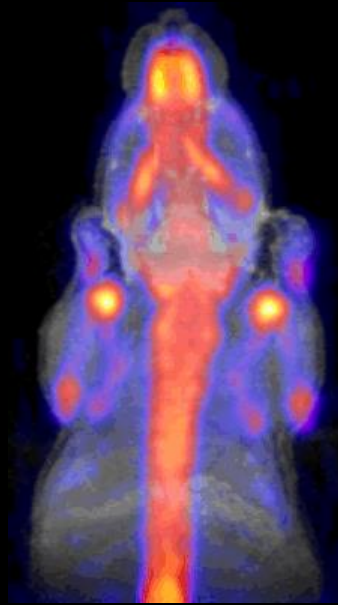


Simultaneous PET/MRI: 3D Projection

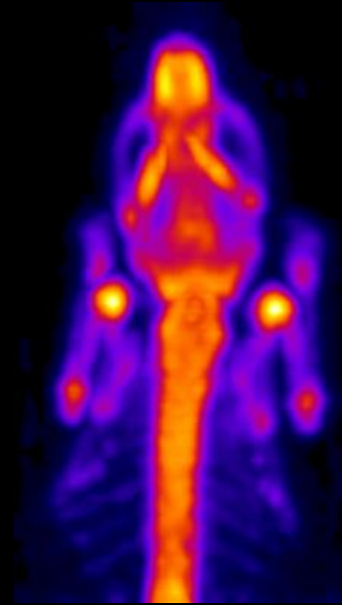
- Injected tracer: ^{18}F -NaF



MR (GRE 3D)



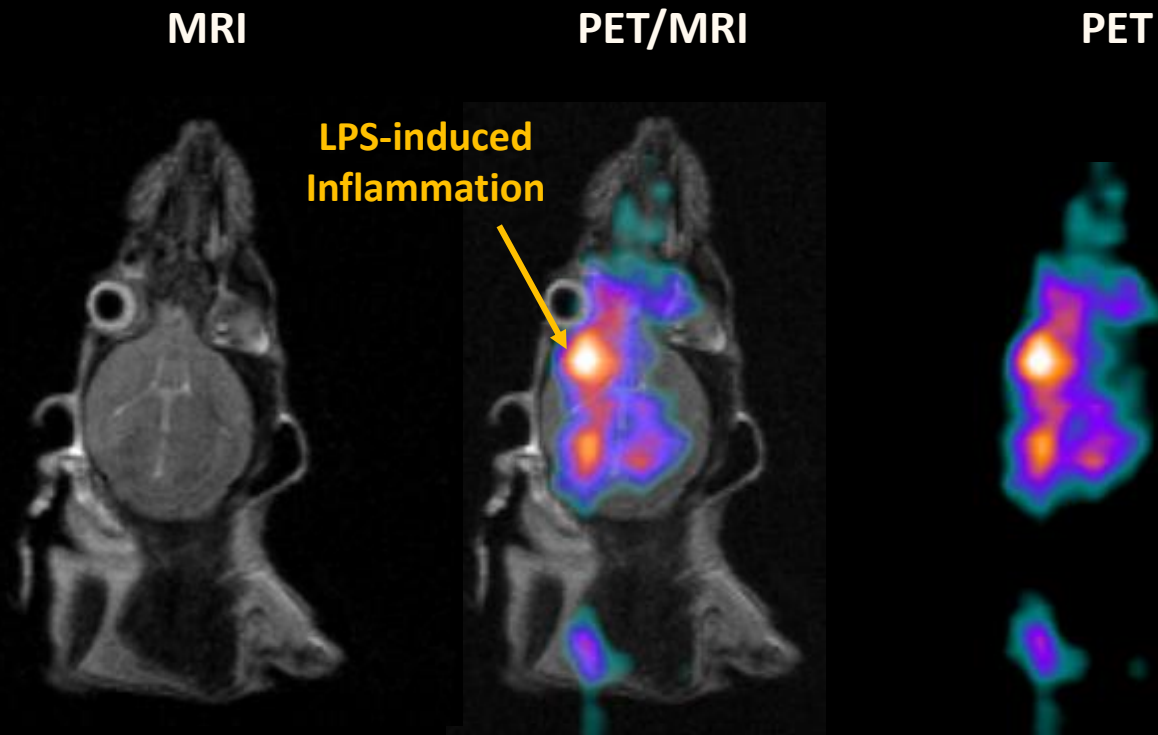
PET/MR



PET

Inflammation Model in Mouse Brain

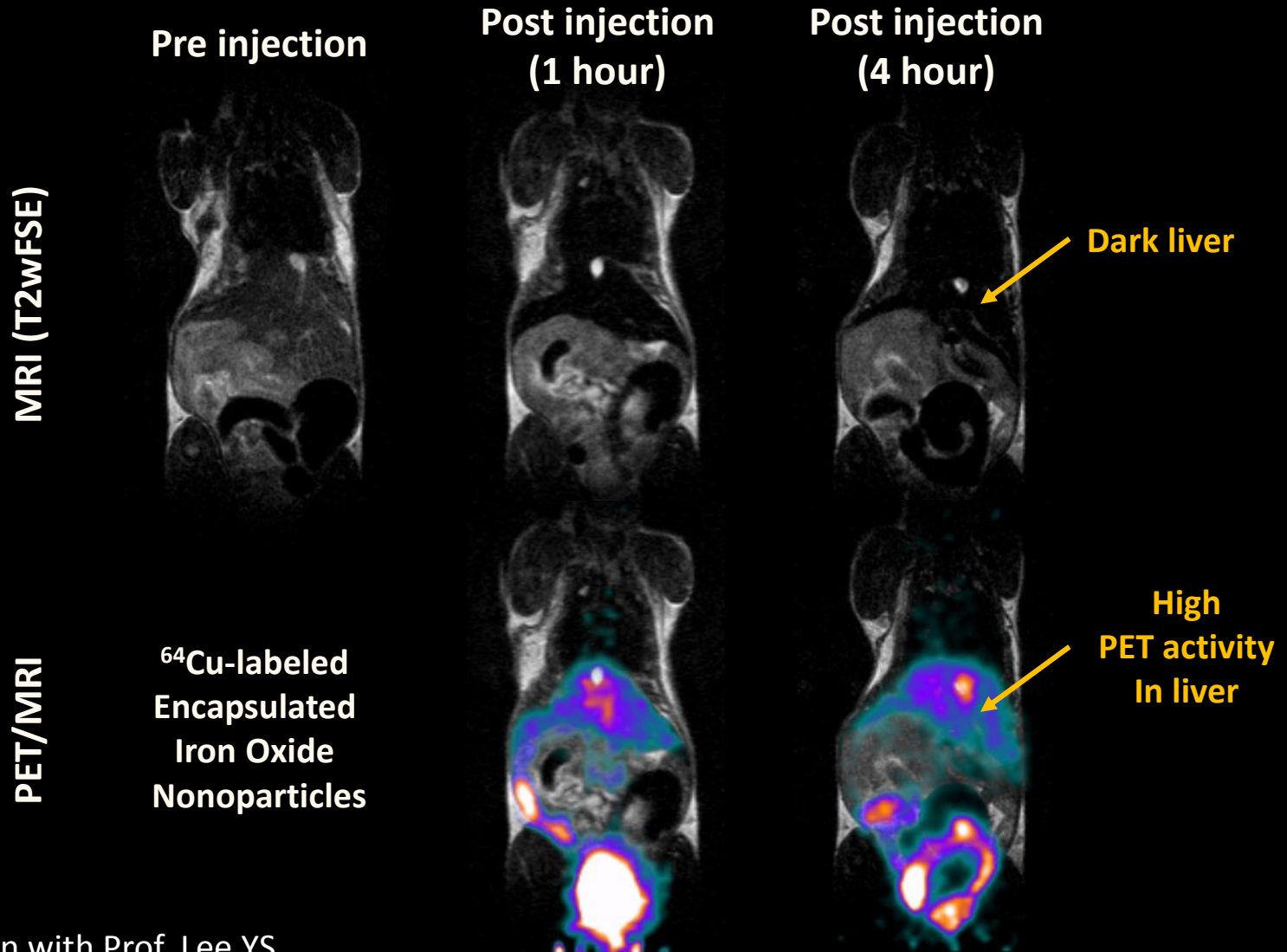
Novel TSPO Imaging Tracer ^{18}F -CB251



200 μCi ^{18}F -CB251 / 20 min uptake

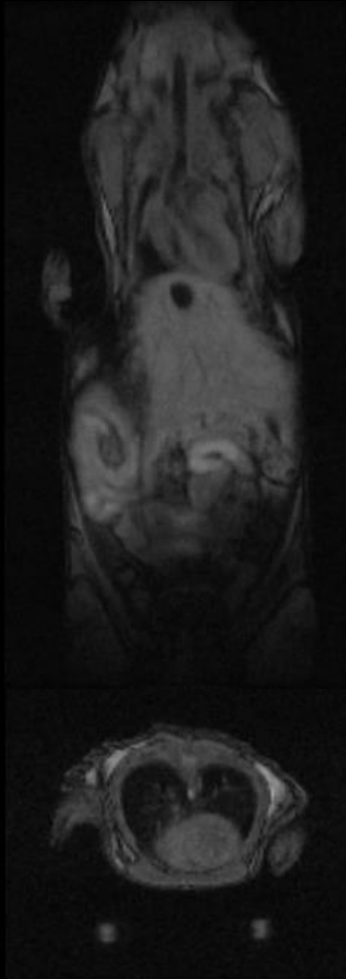
Collaboration with Prof. Yoon H & Lee BC
(Seoul National University Hospital)

Dual-modal PET/MRI Probe

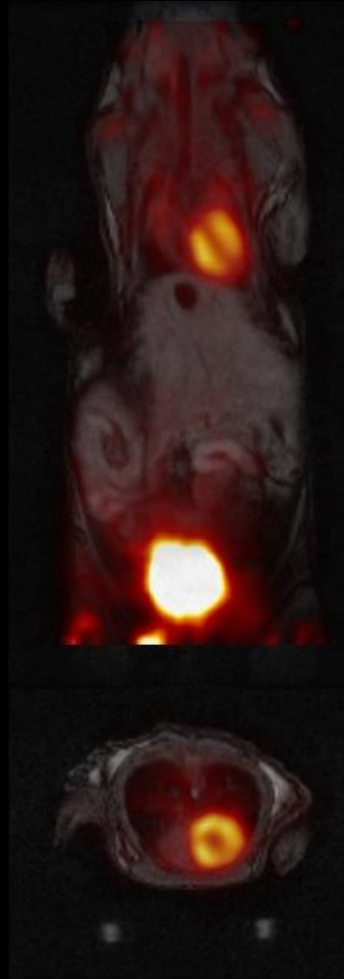


Mouse Whole Body ^{18}F -FDG PET / MRI

MRI (T1wGRE3D)



PET/MRI



PET



302 μCi injection / 45 min uptake time

KB tumor model (24.8 g)

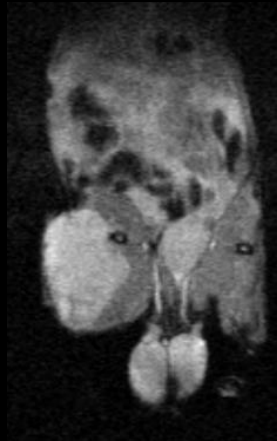
^{64}Cu -IONPs-folate (150 μCi)

IONPs = CMS Nanoparticle (20 nm core)

Folate = Folate- N_3

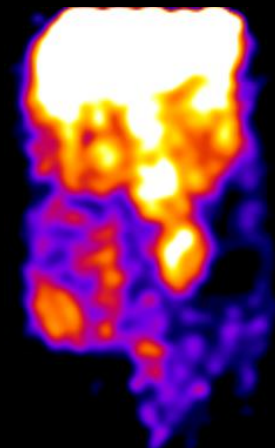
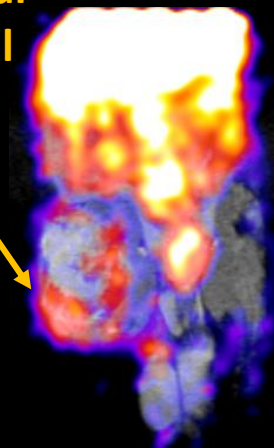
^{64}Cu = ^{64}Cu -NOTA- N_3

Pre injection



**Decreased MRI signal
Increased PET signal**

**Post injection
(24 h)**



PET/MRI

PET

Collaboration with Prof. Lee YS
(Seoul National University Hospital)