

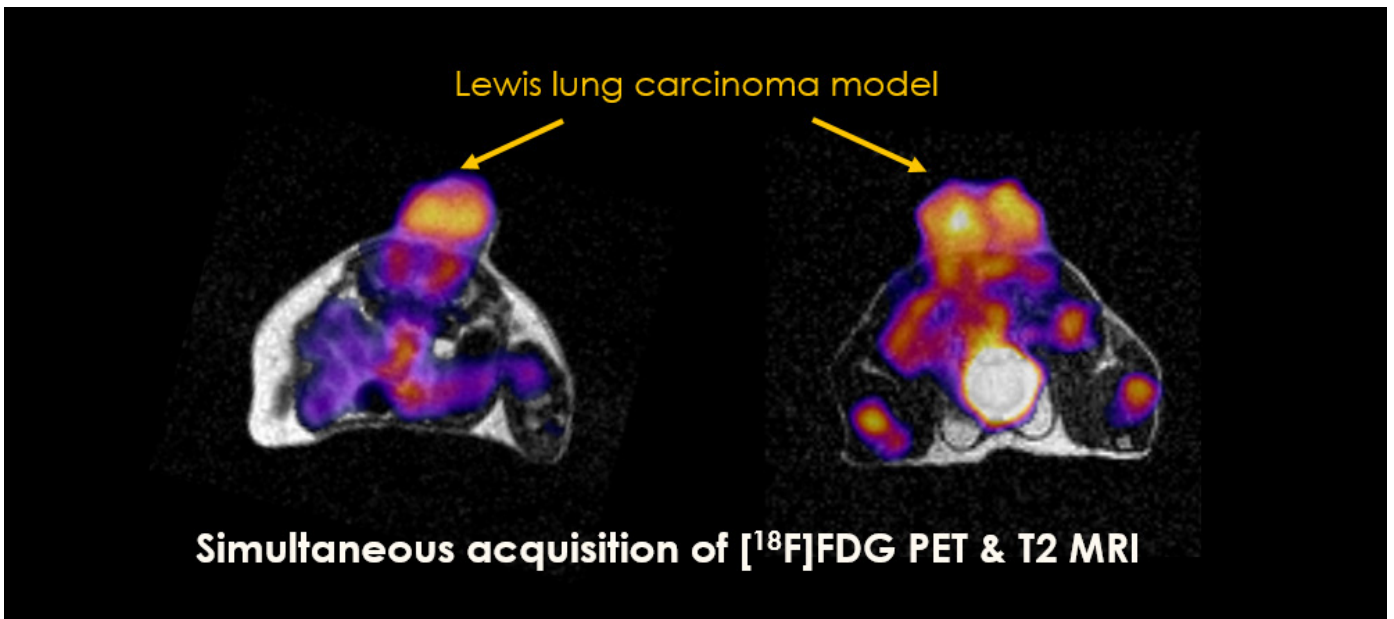
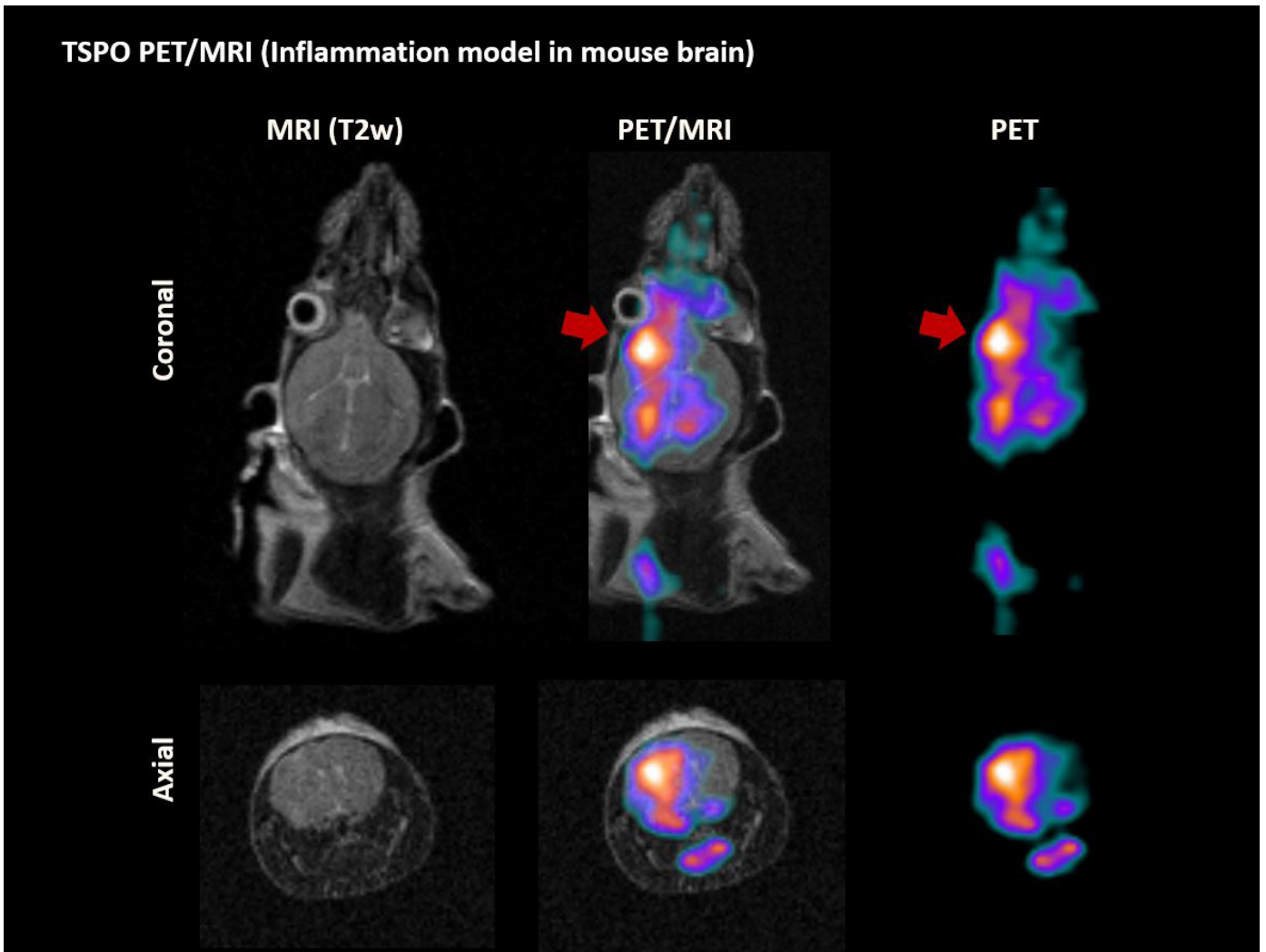
Aspect SimPET

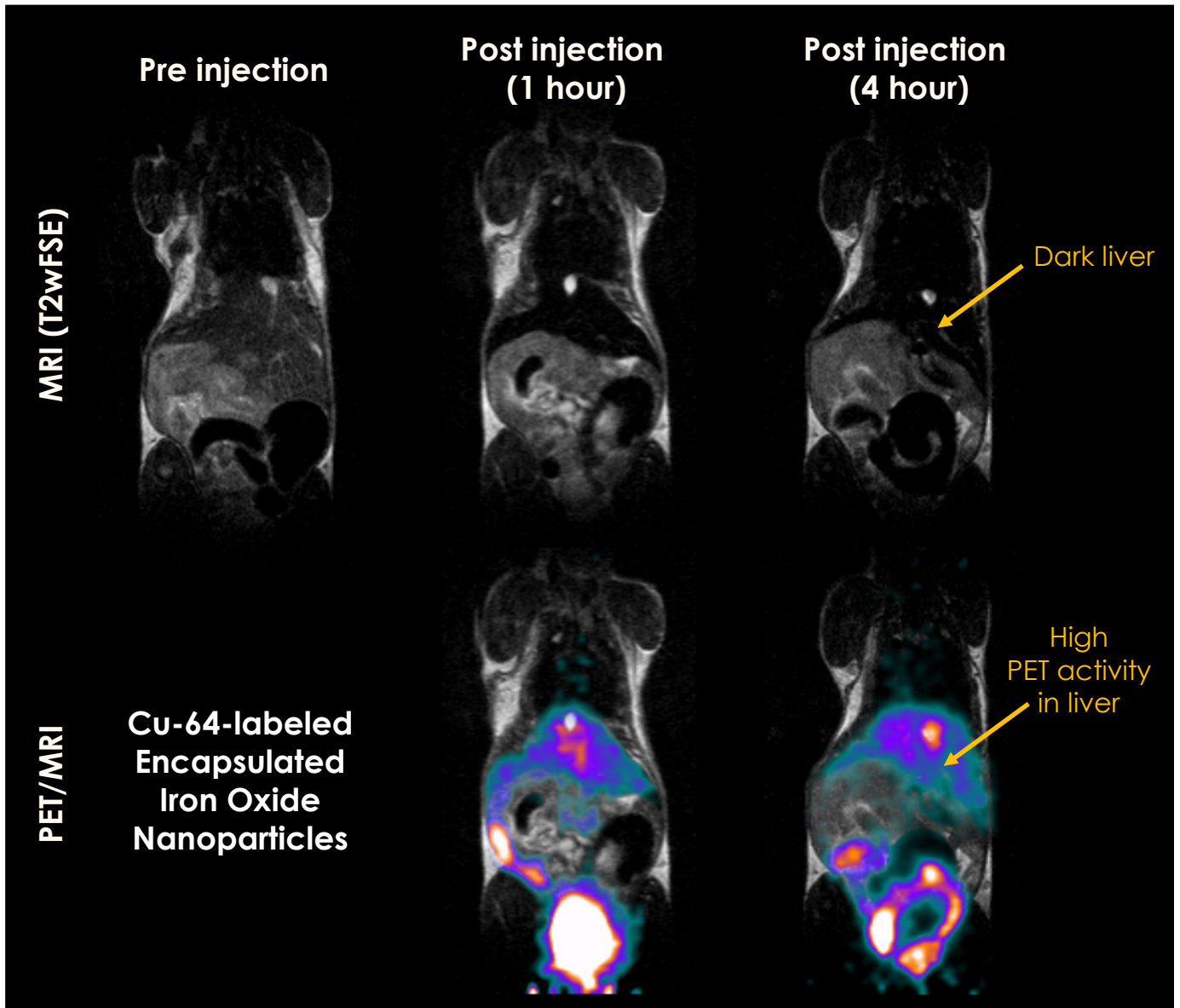
The world's first complete and most cost-effective permanent magnet simultaneous PET/MRI solution for preclinical research

- > High image quality
- > Exceptional PET performance
- > Simultaneous or standalone operation
- > MRI-based attenuation correction
- > No cryogenes
- > Compact and Safe - no stray field
- > Complete system installed in one day
- > Low maintenance
- > Lowest power consumption in the industry



TSPO PET/MRI (Inflammation model in mouse brain)





SimPET
Groundbreaking Technology

The most compact and reliable MRI-compatible PET insert for simultaneous PET/MRI studies in small animals



Proven, futureproof SiPM* PET technology

Excellent PET detector stability

Sub-mm spatial resolution

Flexible modes of operation

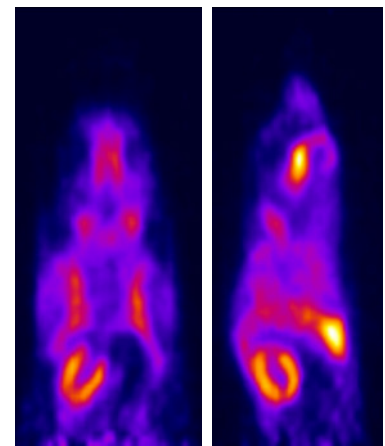
*Silicon Photo Multiplier

PET Specifications

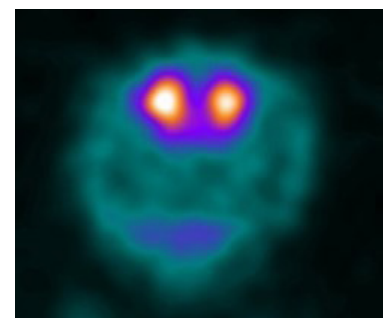
Characteristics	Value
Detector ring diameter (mm)	64
Scintillator materials	LSO
Crystal size (mm ³)	1.2 × 1.2 × 10.0
Number of crystal rings	36
Number of crystals/ring	144
Total number of crystals	5184
Axial FOV (mm)	55
Insert inner diameter (mm)	60

PET Performance

Characteristics	Value
Scatter fraction for mouse	17%
Peak sensitivity	3.4%
Spatial resolution with 3D OSEM	<0.8 mm
Spatial resolution with FBP	<1.3 mm
Energy resolution	15%



Mouse [¹⁸F] FDG PET



Mouse [¹⁸F] FP-CIT PET