

WristView™

MRI System

Point-of-Care, hand and wrist imaging:
Transform your patients' healthcare experience



- > Compact design – small footprint
- > Powerful, high quality MR imaging
- > Negligible cost of ownership
- > Simple operation, user-friendly interface
- > Patient-centric ergonomics
- > Minimum break-even for MRI providers



WristView™ MR Imaging System

The WristView™ is a point-of-care, compact dedicated hand and wrist MRI system that produces high quality MR images affordably and easily. MRI of the hand and wrist assists in timely diagnosis of carpal tunnel syndrome, rheumatoid arthritis, scaphoid fractures and other hand and wrist injuries.

Aspect Imaging's WristView™ MRI enables fast and effortless scanning straight from doctors' surgeries and clinics.

The WristView™ MRI system is a **game changer** in healthcare management, enabling the transition from "fee for service" models of healthcare delivery, to "value added" care models, such as enhanced patient monitoring and rehabilitation practices.

Optimal Patient-Centric Design

- > Non-claustrophobic
- > Ergonomic design for optimal comfort
- > "Whisper gradients" for quietest possible operation
- > Short acquisition time

- > Powerful, high-quality MR Imaging
- > DICOM compatibility
- > PACS connectivity - access images from any point-of-care
- > Simple to operate with an intuitive interface
- > Robust, non-cryogen technology - does not require specialized cooling system
- > Self-shielded - no need for RF-shielded facility

Cutting-Edge Technology

Practical, Affordable, Intuitive

- > Compact (small footprint)
- > Easy and quick installation; ready for imaging from day one
- > Low maintenance requirements and costs
- > Low total cost of ownership
- > Simple to operate - no technical expertise required



Optimal Patient Comfort

- > Cuts out the claustrophobic feeling - only the hand is inserted into the magnet
- > Touch screen interface for simple operation
- > Adjustable seat for patient positioning
- > Inflatable cuff for comfortable hand fixation

Cost-effective MRI system

- > Flexible financing plans available to suit your budget: buy, lease, rent
- > Different Business Models to suit your healthcare needs
- > Affordable, ROI in 18 months
- > Scanning straight from doctors' clinics obviates unnecessary hospital appointments

Specifications

Site Planning	
Minimum suite size	3 m x 4 m (12 sq. m / 129.2 sq. ft)**
Front End installed weight	Less than 2,000 kg
**Minimum suite size required to include all system components. A smaller suite is required if electronic cabinet is installed in a separate room.	
Magnet System	
Type	Permanent magnet, self-shielded
Field strength	1 T
Fringe field	5 Gauss line, 0.6 m from magnet center
Imaging volume	120 x 120 x 70 mm ³ (LR x IS x AP)
Imaging Capabilities	
Sequences	2D Spin-Echo
	2D & 3D Fast Spin Echo
	2D & 3D Spoiled Gradient Echo
	Fat Suppression (IR-FSE)
Slice thickness	2D: ≥ 1.5 mm
	3D: ≥ 0.5 mm
Matrix	2D, 3D: phase and frequency resolution variable separately between 16 to 512
Gradients	
Strength	215 mT/m
Slew Rate	1074 T/m/s (limited to 650 T/m/s by PNS regulatory requirements)
Safety and EMC compliance	
Safety certification	IEC/EN 60601-1, edition 3.1, ES60601-1 (2012)
EMC certification	IEC 60601-1-2, 3 rd and 4 rd edition
USA clearance	FDA 510(k) cleared
EU clearance	CE MDD by BSI Notified Body CE

Complete Wrist Scan in 10-20 Minutes



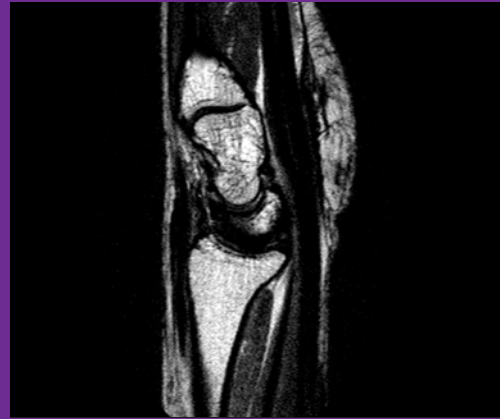
T1 Gradient Echo Coronal
Scan time (min:sec) 4:12



T1 Spin Echo Coronal
Scan time (min:sec) 2:46



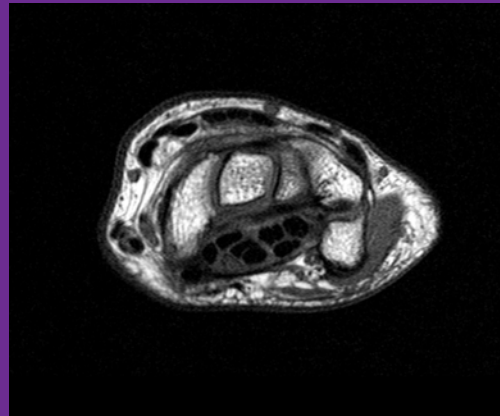
T1 Spin Echo Sagittal
Scan time (min:sec) 1:51



T2 Fast Spin Echo Sagittal
Scan time (min:sec) 4:13



PD Fast Spin Echo Axial
Scan time (min:sec) 4:30



T1 Spin Echo Axial
Scan time (min:sec) 4:41



T1 Gradient Echo Coronal
Scan time (min:sec) 4:12



T1 Spin Echo Sagittal
Scan time (min:sec) 1:42